

\$300,000 - 340 Stonecrest Place W, Lethbridge

MLS® #A2164856

\$300,000

0 Bedroom, 0.00 Bathroom,
Land on 0.22 Acres

Riverstone, Lethbridge, Alberta

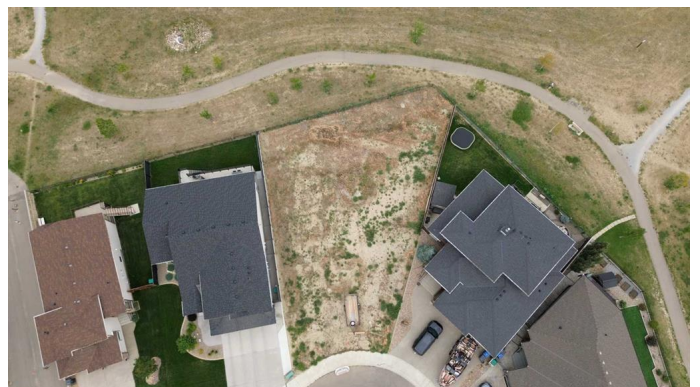
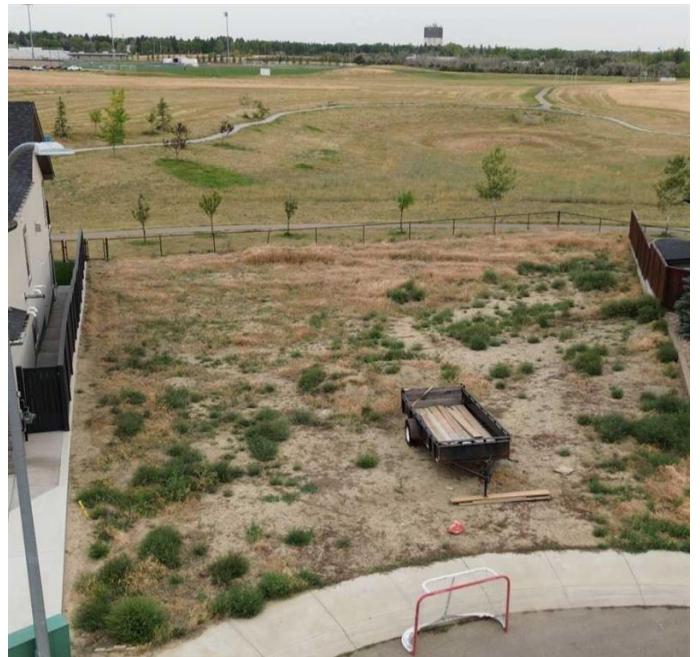
Seize the opportunity to design your ideal home in the prestigious Riverstone community of West Lethbridge. This location boasts convenient access to schools, dining establishments, a gas station, a dog park, and a variety of other amenities. It presents a unique chance for individuals seeking to construct their dream residence or an investment property within a well-established and tranquil neighborhood on a spacious pie-shaped lot that backs onto a park and the coulee, with walking trails for your enjoyment!

Essential Information

MLS® #	A2164856
Price	\$300,000
Bathrooms	0.00
Acres	0.22
Type	Land
Sub-Type	Residential Land
Status	Active

Community Information

Address	340 Stonecrest Place W
Subdivision	Riverstone
City	Lethbridge
County	Lethbridge
Province	Alberta
Postal Code	T1K 6W3



Additional Information

Date Listed	September 12th, 2024
Days on Market	261
Zoning	R-L

Listing Details

Listing Office RE/MAX REAL ESTATE - LETHBRIDGE

Data is supplied by Pillar 9â„¢ MLS® System. Pillar 9â„¢ is the owner of the copyright in its MLS® System. Data is deemed reliable but is not guaranteed accurate by Pillar 9â„¢. The trademarks MLS®, Multiple Listing Service® and the associated logos are owned by The Canadian Real Estate Association (CREA) and identify the quality of services provided by real estate professionals who are members of CREA. Used under license.