

\$420,000 - 3740 Highway 12, Lacombe

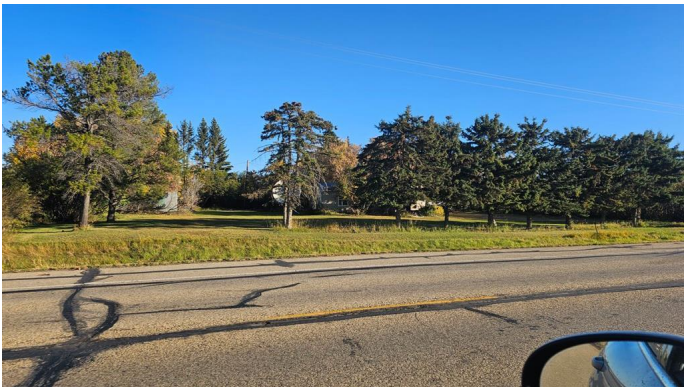
MLS® #A2172154

\$420,000

0 Bedroom, 0.00 Bathroom,
Commercial on 0.00 Acres

NONE, Lacombe, Alberta

Welcome to a fantastic opportunity! This expansive 2-acre commercial property, located within city limits, offers endless potential for a variety of ventures. With a prime location and easy access to major thoroughfares, this versatile lot is perfect for entrepreneurs and investors alike. This property is not just a lot; itâ€™s a canvas for your entrepreneurial dreams. Ideas like a storage facility, roadside market place, or small business, donâ€™t miss out on this incredible opportunity to shape the future of your community. Whether youâ€™re looking to expand your business or invest in a promising venture, this property is the perfect starting point.



Essential Information

MLS® #	A2172154
Price	\$420,000
Bathrooms	0.00
Acres	0.00
Type	Commercial
Sub-Type	Mixed Use
Status	Active

Community Information

Address	3740 Highway 12
Subdivision	NONE
City	Lacombe
County	Lacombe

Province	Alberta
Postal Code	T4L1X5

Additional Information

Date Listed	October 8th, 2024
Days on Market	224
Zoning	C4

Listing Details

Listing Office	CIR Realty
----------------	------------

Data is supplied by Pillar 9â„¢ MLS® System. Pillar 9â„¢ is the owner of the copyright in its MLS® System. Data is deemed reliable but is not guaranteed accurate by Pillar 9â„¢. The trademarks MLS®, Multiple Listing Service® and the associated logos are owned by The Canadian Real Estate Association (CREA) and identify the quality of services provided by real estate professionals who are members of CREA. Used under license.