

\$8,900,000 - 251066 Range Road 282 Road, Rural Rocky View County

MLS® #A2194356

\$8,900,000

0 Bedroom, 0.00 Bathroom,
Land on 148.21 Acres

NONE, Rural Rocky View County, Alberta

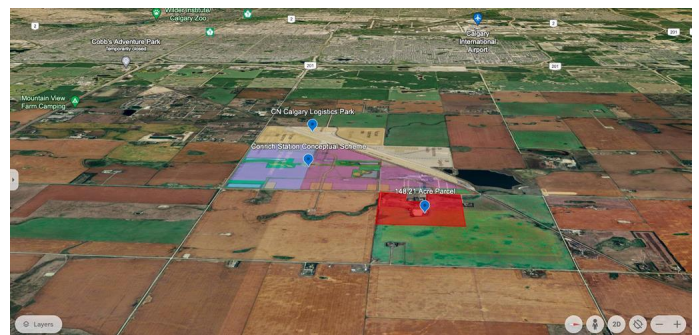
Future Industrial Development Land for sale!
Located within the Conrich Area Structure Plan and is designated for future Heavy Industrial and light Industrial use. Situated along Range Road 282, the property is minutes away from CN Calgary Logistics Park and other future industrial parks. Low property tax compared to Chestermere and Calgary. Located less than 10 minutes away from Conrich, 15 minutes from Chestermere and 30 minutes away from Calgary. Neighboring properties currently in for sub division and construction to start this year

Essential Information

| | |
|-----------|-----------------|
| MLS® # | A2194356 |
| Price | \$8,900,000 |
| Bathrooms | 0.00 |
| Acres | 148.21 |
| Type | Land |
| Sub-Type | Industrial Land |
| Status | Active |

Community Information

| | |
|-------------|----------------------------|
| Address | 251066 Range Road 282 Road |
| Subdivision | NONE |
| City | Rural Rocky View County |
| County | Rocky View County |
| Province | Alberta |



Postal Code T1Z 0P3

Exterior

Exterior Features None

Lot Description Farm, Level

Additional Information

Date Listed February 14th, 2025

Days on Market 135

Zoning A-GEN

Listing Details

Listing Office RE/MAX Complete Realty

Data is supplied by Pillar 9â„¢ MLS® System. Pillar 9â„¢ is the owner of the copyright in its MLS® System. Data is deemed reliable but is not guaranteed accurate by Pillar 9â„¢. The trademarks MLS®, Multiple Listing Service® and the associated logos are owned by The Canadian Real Estate Association (CREA) and identify the quality of services provided by real estate professionals who are members of CREA. Used under license.