

# \$459,900 - 461077 Rge Rd 61, Rural Wainwright No. 61, M.D. of

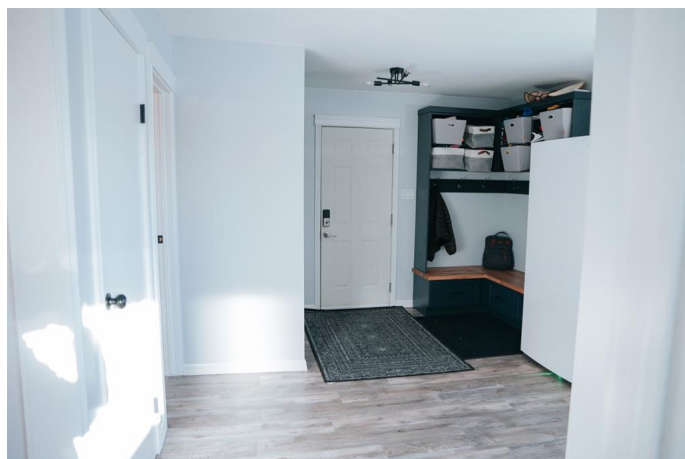
MLS® #A2202834

**\$459,900**

3 Bedroom, 2.00 Bathroom, 1,460 sqft  
Residential on 19.31 Acres

NONE, Rural Wainwright No. 61, M.D. of, Alberta

If you're looking for peaceful country living with modern updates and plenty of space, this beautiful bungalow on 19 acres in the Giltedge area is the perfect fit! Located just a 10-minute drive from town, with pavement nearly all the way to the driveway, this property offers both convenience and tranquility. As you enter the home, you'll be welcomed by a spacious mudroom, thoughtfully updated in 2023 with a new coat storage area. This space also provides access to a renovated 4-piece guest bath (2020) and a comfortable bedroom—ideal for guests or family members. The heart of the home is the large, open kitchen, designed for both functionality and style. With ample cabinet space, new appliances, updated flooring, fresh paint, and extra cabinetry installed in 2023, this space is perfect for cooking and entertaining. The kitchen seamlessly connects to the dining area, which flows into a warm and inviting living room, featuring beautiful woodwork and a cozy gas fireplace—the perfect spot to unwind. Down the hall, you'll find another well-sized bedroom and the primary suite, complete with its own 3-piece ensuite for added privacy and comfort. Step outside, and you'll find an abundance of space to enjoy the great outdoors. The large yard is perfect for families, with a playground for kids and plenty of open space for activities. A gravel



parking pad next to the house allows for convenient parking, while the heated garage with a concrete floor provides a warm, secure spot for your vehicles during colder months. The property is also well-equipped for those with livestock or hobbies, featuring a baby barn, corrals, and a large storage shedâ€”ideal for farm animals, equipment, or extra storage needs. Plus, a new septic tank was installed in 2023, ensuring long-term reliability. This incredible acreage offers privacy, space, and modern updates, all while keeping you close to town. Don't miss outâ€”schedule a showing today and explore the 3D virtual tour!

**Essential Information**

|                |                                  |
|----------------|----------------------------------|
| MLS® #         | A2202834                         |
| Price          | \$459,900                        |
| Bedrooms       | 3                                |
| Bathrooms      | 2.00                             |
| Full Baths     | 2                                |
| Square Footage | 1,460                            |
| Acres          | 19.31                            |
| Type           | Residential                      |
| Sub-Type       | Detached                         |
| Style          | Acreage with Residence, Bungalow |
| Status         | Active                           |

**Community Information**

|             |                                  |
|-------------|----------------------------------|
| Address     | 461077 Rge Rd 61                 |
| Subdivision | NONE                             |
| City        | Rural Wainwright No. 61, M.D. of |
| County      | Wainwright No. 61, M.D. of       |
| Province    | Alberta                          |
| Postal Code | T0B 0V0                          |

**Amenities**

|              |                        |
|--------------|------------------------|
| Parking      | Double Garage Detached |
| # of Garages | 2                      |

## Interior

|                   |   |
|-------------------|---|
| Interior Features | Ceiling Fan(s), Kitchen Island, Laminate Counters, Natural Woodwork, Open Floorplan, Storage, Sump Pump(s), Vinyl Windows |
| Appliances        | Dishwasher, Microwave Hood Fan, Refrigerator, Stove(s), Washer/Dryer, Window Coverings                                    |
| Heating           | Forced Air  |
| Cooling           | None  |
| Fireplace         | Yes   |
| # of Fireplaces   | 1   |
| Fireplaces        | Gas   |
| Has Basement      | Yes   |
| Basement          | Partial, Partially Finished   |

## Exterior

|                   |                                   |
|-------------------|-----------------------------------|
| Exterior Features | Playground, Rain Gutters          |
| Lot Description   | Lawn, Many Trees, Rectangular Lot |
| Roof              | Asphalt Shingle                   |
| Construction      | Vinyl Siding                      |
| Foundation        | Poured Concrete                   |

## Additional Information

|                |                  |
|----------------|------------------|
| Date Listed    | March 17th, 2025 |
| Days on Market | 94               |
| Zoning         | AG               |

## Listing Details

|                |                       |
|----------------|-----------------------|
| Listing Office | RE/MAX BAUGHAN REALTY |
|----------------|-----------------------|

Data is supplied by Pillar 9â„¢ MLSÂ® System. Pillar 9â„¢ is the owner of the copyright in its MLSÂ® System. Data is deemed reliable but is not guaranteed accurate by Pillar 9â„¢. The trademarks MLSÂ®, Multiple Listing ServiceÂ® and the associated logos are owned by The Canadian Real Estate Association (CREA) and identify the quality of services provided by real estate professionals who are members of CREA. Used under license.