

\$1,100,000 - 2207 Douglasbank Crescent Se, Calgary

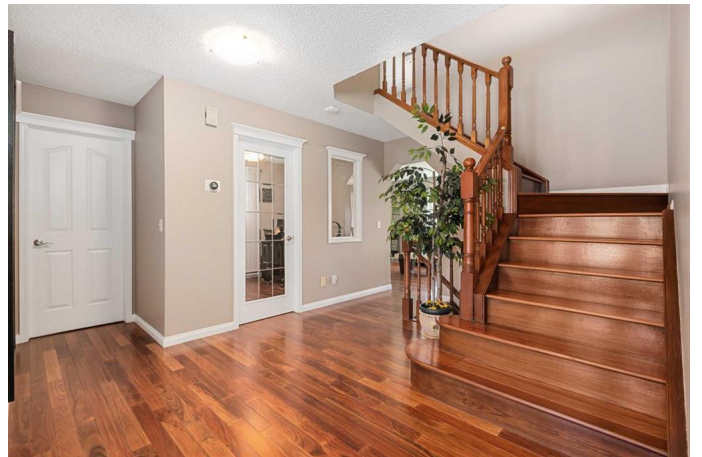
MLS® #A2208024

\$1,100,000

6 Bedroom, 4.00 Bathroom, 2,447 sqft
Residential on 0.19 Acres

Douglasdale/Glen, Calgary, Alberta

Rarely do opportunities like this arise! Backing directly onto Fish Creek Park, this meticulously maintained six bedroom home offers an unparalleled lifestyle. Enjoy direct park access and a tons of upgrades, including a new kitchen (2015), new triple pane windows on the main and upper floor, upper floor A/C, updated hot water tank, water softener and deck with glass railing. Inside, Brazilian Cherry hardwood floors flow throughout the first and second levels. 9 foot ceilings add to the airy feel. The large two-story foyer leads to a large formal living room. The formal dining room seats a crowd, while a main floor office and mudroom (complete with front-loading washer/dryer) provide practicality. Relax in the family room, boasting large windows overlooking the park and a cozy gas fireplace with a stone surround. A good sized kitchen nook overlooks the green space and is perfect for morning coffee. The new kitchen features Jenn Air stainless steel appliances, including a wall oven, microwave, dishwasher, and a new Kitchen Aid cooktop. There are tons of cabinets, a corner pantry and counter space. Upstairs, find four bedrooms, including a beautifully renovated main 4-piece bath. The expansive primary suite overlooks Fish Creek Park and offers a large walk-in closet and a luxurious 5-piece ensuite with a stand-alone shower, a soaker tub, and dual sinks. The kids will love the 3 other upper bedrooms. These bedrooms are large with good closet space. The walk-out basement is perfect for



multi-generational families with a small, illegal suite, two additional large bedrooms and a 4 piece bath. In floor heat keeps this level cozy and warm. There are so many lovely spaces to enjoy the outdoors in this home. Newly refurbished with a fibreglass membrane and glass railings, the South facing deck overlooks the back yard and Fish Creek Park. There is a patio space on the walk out level and patio by the front entry. The property is landscaped with shrub and trees. Located in the family-friendly community of Douglasdale, this spectacular property won't last long!

Built in 1992

Essential Information

MLS® #	A2208024
Price	\$1,100,000
Bedrooms	6
Bathrooms	4.00
Full Baths	3
Half Baths	1
Square Footage	2,447
Acres	0.19
Year Built	1992
Type	Residential
Sub-Type	Detached
Style	2 Storey
Status	Active

Community Information

Address	2207 Douglasbank Crescent Se
Subdivision	Douglasdale/Glen
City	Calgary
County	Calgary
Province	Alberta
Postal Code	T2Z 2J4

Amenities

Parking Spaces	4
Parking	Double Garage Attached
# of Garages	2

Interior

Interior Features	Built-in Features, Ceiling Fan(s), Central Vacuum, Closet Organizers, Double Vanity, Granite Counters, Jetted Tub, Kitchen Island, No Animal Home, No Smoking Home, Pantry, Recessed Lighting, Skylight(s), Track Lighting, Vinyl Windows
Appliances	Central Air Conditioner, Dishwasher, Dryer, Electric Cooktop, Freezer, Microwave Hood Fan, Range Hood, Refrigerator, See Remarks, Washer, Window Coverings
Heating	In Floor, Forced Air, Natural Gas
Cooling	Partial
Fireplace	Yes
# of Fireplaces	1
Fireplaces	Gas
Has Basement	Yes
Basement	Full, Walk-Out

Exterior

Exterior Features	BBQ gas line, Private Yard, Storage
Lot Description	Backs on to Park/Green Space, Few Trees, Landscaped, Views
Roof	Asphalt Shingle
Construction	Brick, Vinyl Siding, Wood Frame
Foundation	Poured Concrete

Additional Information

Date Listed	April 5th, 2025
Days on Market	1
Zoning	R-CG

Listing Details

Listing Office	Royal LePage Mission Real Estate
----------------	----------------------------------

Data is supplied by Pillar 9â„¢ MLSÂ® System. Pillar 9â„¢ is the owner of the copyright in its MLSÂ® System. Data is deemed reliable but is not guaranteed accurate by Pillar 9â„¢. The trademarks MLSÂ®, Multiple Listing ServiceÂ® and the associated logos are owned by The Canadian Real Estate Association (CREA) and identify the quality of services provided by real estate professionals who are members of CREA. Used under license.