

# \$529,900 - 5420 Valentine Crescent Se, Calgary

MLS® #A2208265

## \$529,900

5 Bedroom, 2.00 Bathroom, 1,062 sqft  
Residential on 0.14 Acres

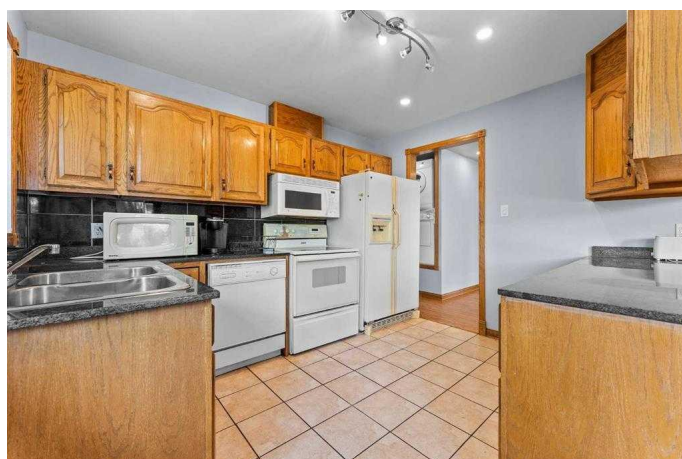
Penbrooke Meadows, Calgary, Alberta

This inviting 5 bedroom, 2 bathroom bungalow sits on a generous corner-end lot, offering both immediate livability and future development potential. The property features 3 bedrooms on the main floor with an additional 2 bedroom illegal basement suite and a detached garage. The main level welcomes you with abundant natural light and a functional layout, while the self-contained basement suite provides excellent rental income possibilities. The strategic corner lot position not only ensures privacy but also opens up various development opportunities for the right buyer. Perfect for first-time buyers seeking assistance with mortgage payments, investors looking for steady returns, or visionaries interested in future development. This versatile property combines current comfort with long-term value in a thriving neighborhood. Schedule your viewing today to explore all this exceptional property has to offer!

Built in 1960

## Essential Information

MLS® #	A2208265
Price	\$529,900
Bedrooms	5
Bathrooms	2.00
Full Baths	2
Square Footage	1,062
Acres	0.14



Year Built	1960
Type	Residential
Sub-Type	Detached
Style	Bungalow
Status	Active

### Community Information

Address	5420 Valentine Crescent Se
Subdivision	Penbrooke Meadows
City	Calgary
County	Calgary
Province	Alberta
Postal Code	T2A 2K6

### Amenities

Parking Spaces	2
Parking	Alley Access, Off Street, RV Access/Parking
# of Garages	1

### Interior

Interior Features	Separate Entrance
Appliances	Dishwasher, Dryer, Electric Stove, Refrigerator, Washer, Window Coverings, Garburator
Heating	Forced Air, Natural Gas
Cooling	None
Has Basement	Yes
Basement	Finished, Full, Suite

### Exterior

Exterior Features	Private Yard
Lot Description	Back Lane, Back Yard, Corner Lot, Front Yard, Irregular Lot, Treed
Roof	Asphalt Shingle
Construction	Stucco, Wood Frame
Foundation	Poured Concrete

### Additional Information

Date Listed	April 3rd, 2025
Days on Market	52
Zoning	R-CG

**Listing Details**

Listing Office                      eXp Realty

Data is supplied by Pillar 9â„¢ MLSÂ® System. Pillar 9â„¢ is the owner of the copyright in its MLSÂ® System. Data is deemed reliable but is not guaranteed accurate by Pillar 9â„¢. The trademarks MLSÂ®, Multiple Listing ServiceÂ® and the associated logos are owned by The Canadian Real Estate Association (CREA) and identify the quality of services provided by real estate professionals who are members of CREA. Used under license.