

# \$149,000 - 8 Township Road 122, Rural Forty Mile No. 8, County of

---

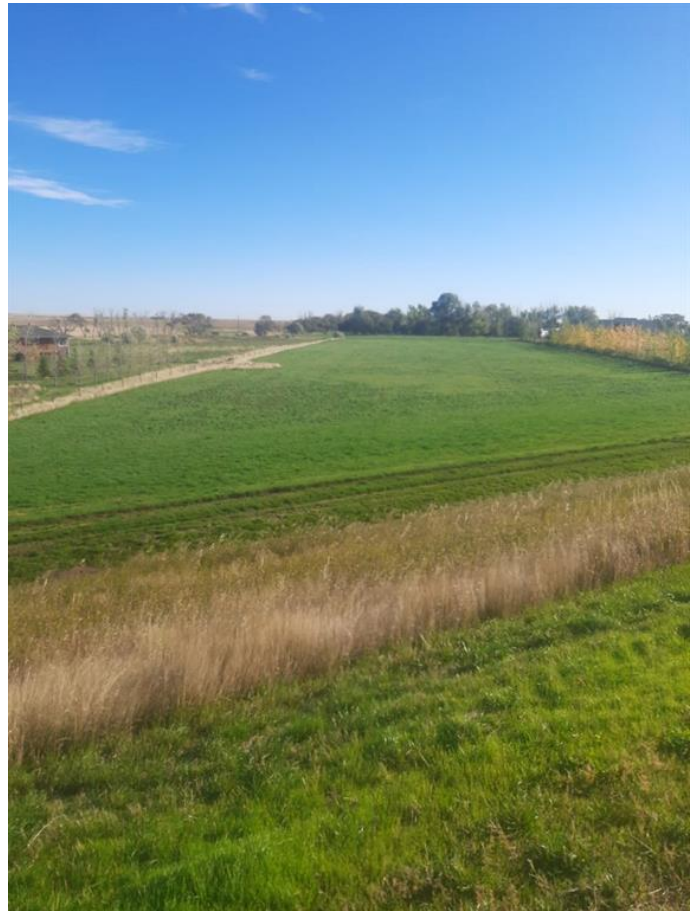
MLS® #A2213534

**\$149,000**

0 Bedroom, 0.00 Bathroom,  
Land on 3.95 Acres

NONE, Rural Forty Mile No. 8, County of,  
Alberta

Build your dream home near a lake! Fantastic opportunity to develop this 3.9 acre parcel which has power and gas to the lot line and is part of the water co-op. Lot is ready for development, sheltered by the dam, and is within walking distance to the lake! Located just past Golden Sheaf Park, a 20 minute drive from Medicine Hat. Imagine owning a little piece of paradise! Call to see it or for more details.



## Essential Information

MLS® #	A2213534
Price	\$149,000
Bathrooms	0.00
Acres	3.95
Type	Land
Sub-Type	Residential Land
Status	Active

## Community Information

Address	8 Township Road 122
Subdivision	NONE
City	Rural Forty Mile No. 8, County of
County	Forty Mile No. 8, County of
Province	Alberta
Postal Code	T0K 1Z0

Amenities

Utilities Electricity at Lot Line, Natural Gas

Additional Information

Date Listed May 9th, 2025  
Days on Market 22  
Zoning CR

Listing Details

Listing Office RE/MAX MEDALTA REAL ESTATE



Data is supplied by Pillar 9â„¢ MLSÂ® System. Pillar 9â„¢ is the owner of the copyright in its MLSÂ® System. Data is deemed reliable but is not guaranteed accurate by Pillar 9â„¢. The trademarks MLSÂ®, Multiple Listing ServiceÂ® and the associated logos are owned by The Canadian Real Estate Association (CREA) and identify the quality of services provided by real estate professionals who are members of CREA. Used under license.

