

\$475,000 - 238 Christie Park Mews Sw, Calgary

MLS® #A2213617

\$475,000

2 Bedroom, 2.00 Bathroom, 1,506 sqft

Residential on 0.00 Acres

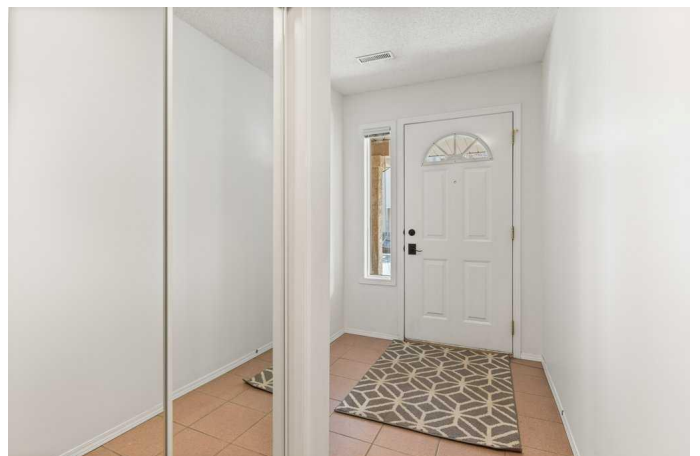
Christie Park, Calgary, Alberta

Welcome to this beautifully updated 2 bedroom, 1.5 bathroom end-unit townhouse nestled in the sought after community of Christie Park. Backing onto greenspace, this spacious home offers both privacy and a connection to nature. Step inside to discover new laminate flooring and modern light fixtures that enhance the home's bright and neutral palette.

The open concept living and dining areas are perfect for entertaining, while the well appointed kitchen offers ample storage and functionality. A wood burning fireplace, laundry, and a half bath complete the main floor.

Upstairs, you'll find two generously sized bedrooms, including a large primary bedroom with a cheater 4 piece ensuite featuring a large soaking tub. A versatile flex space on the upper level provides the ideal setting for a home office, bonus room, or could be converted into a third bedroom to suit your needs.

Additional highlights include an attached single garage with driveway parking for a second vehicle, and easy access to the Christie Park Ravine—perfect for morning walks. Located just minutes from top tier amenities such as Aspen Landing, Signal Hill Centre, and West Market Square, you'll enjoy a variety of shopping, dining, and recreational options at your fingertips. The nearby



Westside Recreation Centre offers a pool, ice rinks, and fitness facilities, while easy access to the West LRT station and major routes like 17th Avenue SW and Sarcee Trail make commuting a breeze. Experience the perfect blend of comfort, convenience, and community in this exceptional Christie Park townhouse.

Built in 1994

Essential Information

MLS® #	A2213617
Price	\$475,000
Bedrooms	2
Bathrooms	2.00
Full Baths	1
Half Baths	1
Square Footage	1,506
Acres	0.00
Year Built	1994
Type	Residential
Sub-Type	Row/Townhouse
Style	Townhouse
Status	Active

Community Information

Address	238 Christie Park Mews Sw
Subdivision	Christie Park
City	Calgary
County	Calgary
Province	Alberta
Postal Code	T3H 3H2

Amenities

Amenities	Trash, Visitor Parking
Parking Spaces	2
Parking	Driveway, Garage Faces Front, Single Garage Attached
# of Garages	1

Interior

Interior Features	Central Vacuum, Laminate Counters, Soaking Tub, Storage
Appliances	Dishwasher, Garage Control(s), Microwave, Range Hood, Refrigerator, Washer/Dryer, Window Coverings, Range
Heating	Forced Air
Cooling	Central Air
Fireplace	Yes
# of Fireplaces	1
Fireplaces	Wood Burning
Basement	None

Exterior

Exterior Features	None
Lot Description	Backs on to Park/Green Space
Roof	Asphalt Shingle
Construction	Stucco, Wood Frame, Brick
Foundation	Poured Concrete

Additional Information

Date Listed	April 24th, 2025
Days on Market	31
Zoning	DC

Listing Details

Listing Office	CIR Realty
----------------	------------

Data is supplied by Pillar 9â„¢ MLS® System. Pillar 9â„¢ is the owner of the copyright in its MLS® System. Data is deemed reliable but is not guaranteed accurate by Pillar 9â„¢. The trademarks MLS®, Multiple Listing Service® and the associated logos are owned by The Canadian Real Estate Association (CREA) and identify the quality of services provided by real estate professionals who are members of CREA. Used under license.