

\$3,100,000 - 9440 112 Street, Grande Prairie

MLS® #A2214670

\$3,100,000

0 Bedroom, 0.00 Bathroom,
Commercial on 2.11 Acres

Richmond Industrial Park, Grande Prairie,
Alberta

Functional shop facility with 2 points of access/egress & drive around capabilities. Located in Richmond Industrial District in close proximity to Grande Prairie Airport with excellent access to Highway 40, Highway 43, and Highway 2. The property consists of 2 cranes, 6 grade doors, 20" clear ceiling height, wash bay, double compartment sump, make up air, air-conditioned office and a fenced yard compound.

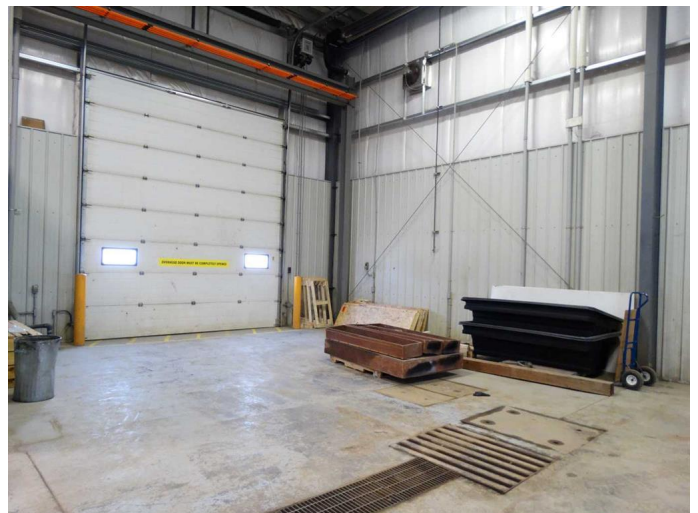
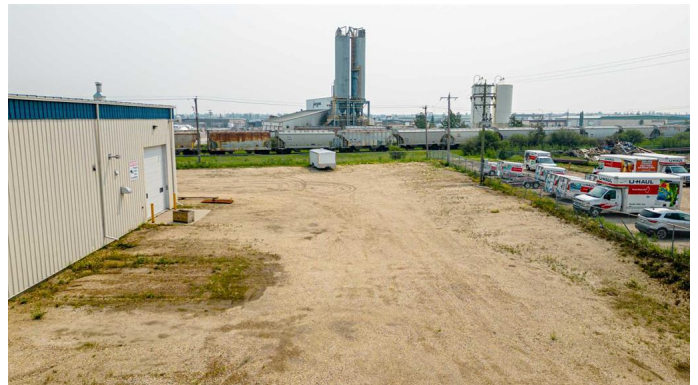
Built in 1998

Essential Information

| | |
|------------|-------------|
| MLS® # | A2214670 |
| Price | \$3,100,000 |
| Bathrooms | 0.00 |
| Acres | 2.11 |
| Year Built | 1998 |
| Type | Commercial |
| Sub-Type | Industrial |
| Status | Active |

Community Information

| | |
|-------------|--------------------------|
| Address | 9440 112 Street |
| Subdivision | Richmond Industrial Park |
| City | Grande Prairie |
| County | Grande Prairie |
| Province | Alberta |
| Postal Code | T8V 5C1 |



Additional Information

| | |
|----------------|---------------|
| Date Listed | May 5th, 2025 |
| Days on Market | 15 |
| Zoning | IG |

Listing Details

| | |
|----------------|-----------------|
| Listing Office | Honestdoor Inc. |
|----------------|-----------------|

Data is supplied by Pillar 9â„¢ MLS® System. Pillar 9â„¢ is the owner of the copyright in its MLS® System. Data is deemed reliable but is not guaranteed accurate by Pillar 9â„¢. The trademarks MLS®, Multiple Listing Service® and the associated logos are owned by The Canadian Real Estate Association (CREA) and identify the quality of services provided by real estate professionals who are members of CREA. Used under license.