

# \$599,900 - 355 Pinewind Road Ne, Calgary

MLS® #A2215447

**\$599,900**

4 Bedroom, 3.00 Bathroom, 1,158 sqft

Residential on 0.11 Acres

Pineridge, Calgary, Alberta

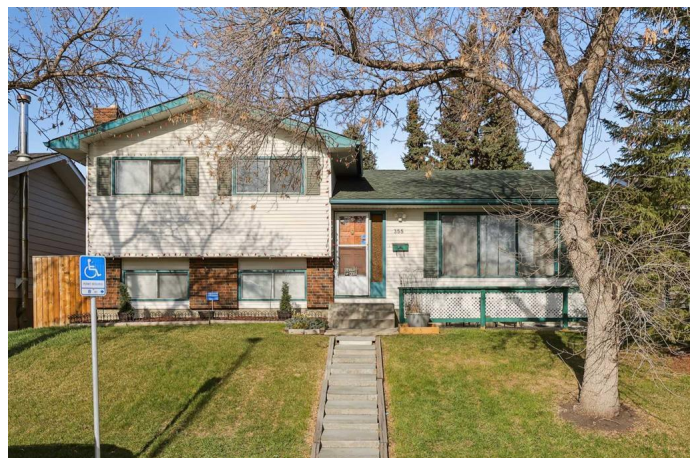
\*\*\* OPEN HOUSE Sat May 24, 2025 1pm - 3pm \*\*\* \*\* PRICED TO SELL \*\* Incredible Value! Welcome to 355 Pinewind Road NE—a cherished 4-level split, lovingly maintained by its original owners for over 40 years. Spacious and full of warmth, this home has been the backdrop for raising a family and hosting countless gatherings. Thoughtful updates include fresh main floor paint and new kitchen flooring (2025), a two-tier deck (2024), updated patios and sidewalks (2023), and a new furnace motor (2020) with commercial-grade A/C (2019), 35 year fiberglass shingles with lifetime warranty (2009). Renovated bathrooms, a refreshed master suite, a newer washer and dryer, and a beautifully landscaped yard with planters and a gazebo add to its appeal. Located in the vibrant community of Pineridge, you'll enjoy easy access to schools, parks, shopping, restaurants, Village Square Leisure Centre, and major roadways like Memorial Drive and Stoney Trail. This isn't just a home—it's a place to build lasting memories. Don't miss your chance to make it yours!

Built in 1975

## Essential Information

MLS® # A2215447

Price \$599,900



|                |               |
|----------------|---------------|
| Bedrooms       | 4             |
| Bathrooms      | 3.00          |
| Full Baths     | 2             |
| Half Baths     | 1             |
| Square Footage | 1,158         |
| Acres          | 0.11          |
| Year Built     | 1975          |
| Type           | Residential   |
| Sub-Type       | Detached      |
| Style          | 4 Level Split |
| Status         | Active        |

### Community Information

|             |                      |
|-------------|----------------------|
| Address     | 355 Pinewind Road Ne |
| Subdivision | Pineridge            |
| City        | Calgary              |
| County      | Calgary              |
| Province    | Alberta              |
| Postal Code | T1Y 2H2              |

### Amenities

|                |  |
|----------------|--|
| Parking Spaces | 2  |
| Parking        | Alley Access, Double Garage Detached, Garage Door Opener, Off Street |
| # of Garages   | 2  |

### Interior

|                   |  |
|-------------------|--|
| Interior Features | Kitchen Island, Laminate Counters, Open Floorplan, See Remarks                 |
| Appliances        | Dishwasher, Dryer, Microwave, Refrigerator, Stove(s), Washer, Window Coverings |
| Heating           | Forced Air, Natural Gas  |
| Cooling           | Central Air  |
| Fireplace         | Yes  |
| # of Fireplaces   | 1  |
| Fireplaces        | Family Room, Wood Burning  |
| Has Basement      | Yes  |
| Basement          | Full, Partially Finished   |

### Exterior

|                   |  |
|-------------------|--|
| Exterior Features | Garden, Storage  |
| Lot Description   | Back Yard, City Lot, Front Yard, Gentle Sloping, Rectangular Lot, Gazebo |
| Roof              | Asphalt Shingle  |
| Construction      | Vinyl Siding, Wood Frame   |
| Foundation        | Poured Concrete  |

### **Additional Information**

|                |                  |
|----------------|------------------|
| Date Listed    | April 30th, 2025 |
| Days on Market | 32               |
| Zoning         | R-CG             |

### **Listing Details**

|                |                        |
|----------------|------------------------|
| Listing Office | Greater Property Group |
|----------------|------------------------|

Data is supplied by Pillar 9â„¢ MLS® System. Pillar 9â„¢ is the owner of the copyright in its MLS® System. Data is deemed reliable but is not guaranteed accurate by Pillar 9â„¢. The trademarks MLS®, Multiple Listing Service® and the associated logos are owned by The Canadian Real Estate Association (CREA) and identify the quality of services provided by real estate professionals who are members of CREA. Used under license.