

\$545,000 - 480 Highland Close, Strathmore

MLS® #A2218593

\$545,000

3 Bedroom, 3.00 Bathroom, 1,490 sqft
Residential on 0.13 Acres

Hillview Estates, Strathmore, Alberta

Tucked at the end of a quiet cul-de-sac, backing onto peaceful green space—this is Hillview Estates at its finest.

Now priced at \$545,000, this 3-bedroom, 2.5-bath home checks all the boxes for buyers craving space, serenity, and small-town living—just 30 minutes from Calgary.

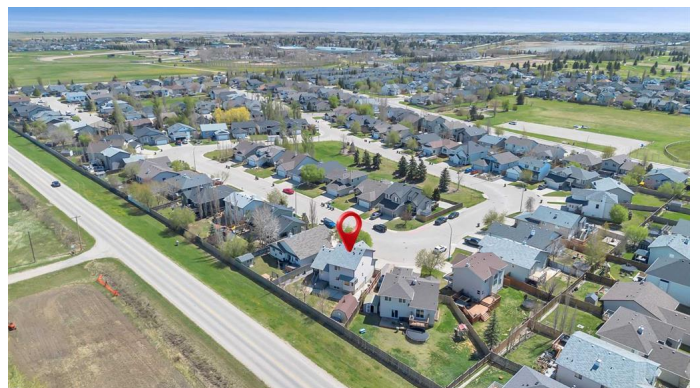
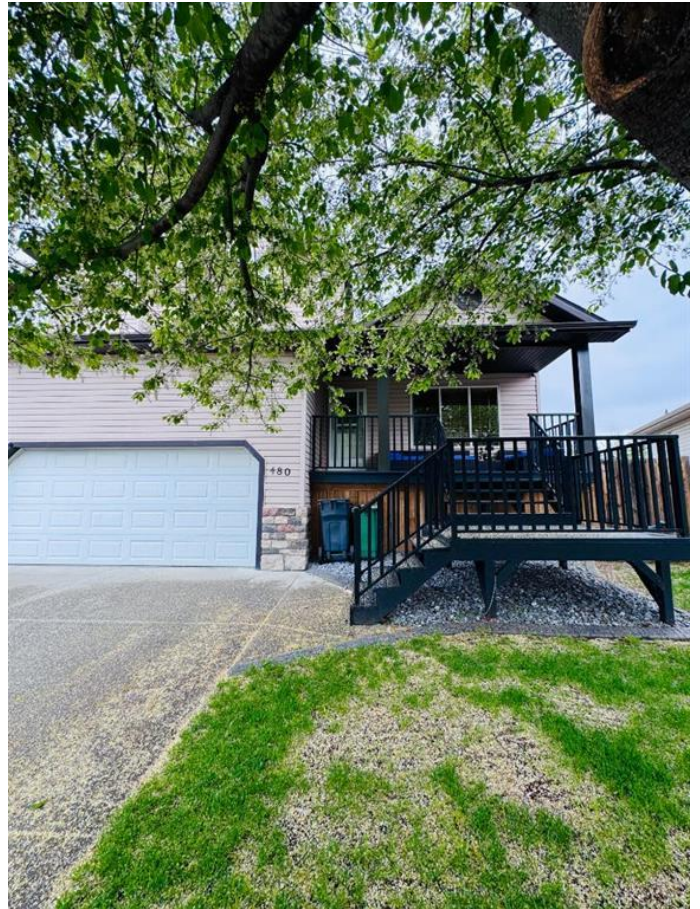
You™ll love the oversized, beautifully maintained yard with no rear neighbours, a heated 12x25 workshop shed with 220 power, and a double attached garage. Whether you™re raising a family, tinkering on projects, or just want elbow room—this home has it all.

Step inside to soaring vaulted ceilings, sun-drenched living areas, and a cozy gas fireplace. The kitchen is functional and fresh with stainless steel appliances, a movable island, and a window that overlooks open fields—not someone else™s backyard.

Upstairs, you™ll find two generously sized bedrooms and a four-piece bath, plus a spacious primary retreat with a walk-in closet, private ensuite, and uninterrupted views of farmland.

The basement? A blank canvas ready for your ideas.

With parks, schools, skating rinks, the golf



course, and rodeo grounds just minutes away, this home offers the kind of lifestyle people move here for.

Ready to see it in person? Book your showing today and come fall in love with the view.

Built in 2006

Essential Information

| | |
|----------------|-------------|
| MLS® # | A2218593 |
| Price | \$545,000 |
| Bedrooms | 3 |
| Bathrooms | 3.00 |
| Full Baths | 2 |
| Half Baths | 1 |
| Square Footage | 1,490 |
| Acres | 0.13 |
| Year Built | 2006 |
| Type | Residential |
| Sub-Type | Detached |
| Style | 2 Storey |
| Status | Active |

Community Information

| | |
|-------------|--------------------|
| Address | 480 Highland Close |
| Subdivision | Hillview Estates |
| City | Strathmore |
| County | Wheatland County |
| Province | Alberta |
| Postal Code | T1P 1Z5 |

Amenities

| | |
|----------------|---|
| Parking Spaces | 4 |
| Parking | Concrete Driveway, Double Garage Attached, Driveway, Garage Faces Front |
| # of Garages | 2 |

Interior

| | |
|-------------------|--|
| Interior Features | High Ceilings, Kitchen Island, Laminate Counters, Pantry, Vaulted Ceiling(s), Vinyl Windows, Walk-In Closet(s) |
| Appliances | Dishwasher, Range Hood, Refrigerator, Electric Oven |
| Heating | Fireplace(s), Forced Air, Natural Gas |
| Cooling | None |
| Fireplace | Yes |
| # of Fireplaces | 1 |
| Fireplaces | Gas, Living Room, Mantle, Masonry, Stone |
| Has Basement | Yes |
| Basement | Full, Unfinished |

Exterior

| | |
|-------------------|--|
| Exterior Features | BBQ gas line, Garden, Private Yard, Storage |
| Lot Description | Cul-De-Sac, Front Yard, Garden, Landscaped, Lawn, Many Trees, No Neighbours Behind |
| Roof | Asphalt Shingle |
| Construction | Vinyl Siding |
| Foundation | Poured Concrete |

Additional Information

| | |
|----------------|---------------|
| Date Listed | May 7th, 2025 |
| Days on Market | 27 |
| Zoning | R1 |

Listing Details

| | |
|----------------|------------|
| Listing Office | RE/MAX Key |
|----------------|------------|

Data is supplied by Pillar 9â„¢ MLS® System. Pillar 9â„¢ is the owner of the copyright in its MLS® System. Data is deemed reliable but is not guaranteed accurate by Pillar 9â„¢. The trademarks MLS®, Multiple Listing Service® and the associated logos are owned by The Canadian Real Estate Association (CREA) and identify the quality of services provided by real estate professionals who are members of CREA. Used under license.