

\$649,900 - 1935 27 Avenue Sw, Calgary

MLS® #A2224137

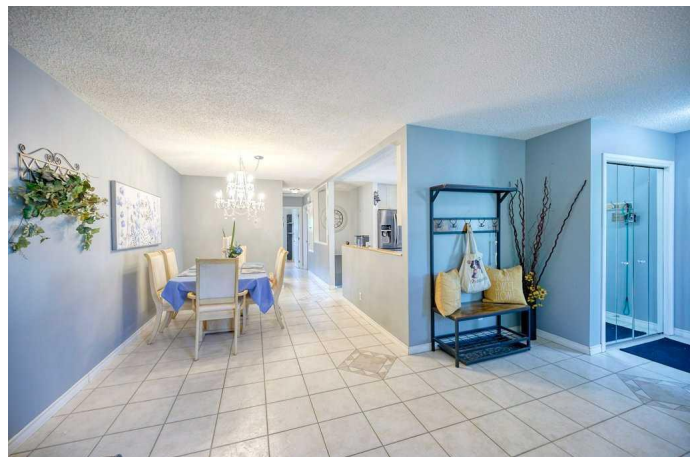
\$649,900

4 Bedroom, 2.00 Bathroom, 962 sqft

Residential on 0.07 Acres

South Calgary, Calgary, Alberta

Modern 3-Level Walkout in Prime Location – Walk to Marda Loop! Welcome to this stylish and functional 4-bedroom semi-detached home offering multi-level living in one of Calgary’s most sought-after communities. This Bungalow features two professionally developed lower levels for a total of 2343 sqft. With a smart layout designed for both privacy and versatility, this 3-level walkout is perfect for families, multigenerational living, or anyone seeking space and comfort with urban convenience. Inside, you’ll find rich basaltic grey walls complemented by two-tone kitchen cabinets in warm zen tones, sleek modern black appliances, and top-down bottom-up blinds throughout – offering both light control and privacy. The home features a 3-piece and a 4-piece bathroom, warm ambient lighting, and thoughtfully designed zones across all levels. The walk out family is warm and cozy with a self standing fireplace/stove that comes with a remote control. Step outside and enjoy the south-facing backyard, rear patio, and upper balcony – perfect for relaxing or entertaining. Safety and peace of mind are standard, with plenty of LED security lighting on this quiet, family-friendly street. The insulated and heated garage is a true standout – fully finished as a man cave with a built-in bar, offering a perfect retreat or entertaining space year-round. Location is unbeatable: stroll to Marda Loop’s shops, cafes, and restaurants, with quick access to major traffic arteries.



Youâ€™re also close to famous River Park
â€“ Dog off lease rec site, Lakeview Golf
Course, and Earl Grey Golf Course. The
community center offers frequent events and
an outdoor pool, and the area is pet-friendly
with welcoming warm neighbors on both sides.
Whether you're looking for your next family
home or a smart investment in a vibrant
neighborhood, this property is a rare find.
COME VIEW IT TODAY. New rpr is ordered.

Built in 1976

Essential Information

MLS® #	A2224137
Price	\$649,900
Bedrooms	4
Bathrooms	2.00
Full Baths	2
Square Footage	962
Acres	0.07
Year Built	1976
Type	Residential
Sub-Type	Semi Detached
Style	Bungalow, Up/Down
Status	Active

Community Information

Address	1935 27 Avenue Sw
Subdivision	South Calgary
City	Calgary
County	Calgary
Province	Alberta
Postal Code	T2T 1H4

Amenities

Parking Spaces	2
Parking	Double Garage Detached, Garage Door Opener, Garage Faces Rear, Heated Garage, Insulated, Oversized, Workshop in Garage, Rear Drive, Side By Side

of Garages 2

Interior

Interior Features Ceiling Fan(s), Closet Organizers, No Smoking Home, Pantry, Separate Entrance, Storage, Vinyl Windows, Walk-In Closet(s), Wood Windows, Track Lighting

Appliances Dishwasher, Dryer, Electric Stove, Freezer, Garage Control(s), Microwave, Refrigerator, Washer, Window Coverings, Electric Cooktop

Heating Central, Mid Efficiency, Fireplace(s), Forced Air, Natural Gas, Pellet Stove, See Remarks

Cooling Central Air

Fireplace Yes

of Fireplaces 1

Fireplaces Gas, Free Standing, Metal

Has Basement Yes

Basement Exterior Entry, Full, Walk-Out

Exterior

Exterior Features Balcony, Dog Run, Private Entrance, Private Yard, Storage, Rain Gutters

Lot Description Back Lane, Back Yard, City Lot, Dog Run Fenced In, Front Yard, Landscaped, Rectangular Lot, Street Lighting, Interior Lot, Sloped Down, Zero Lot Line

Roof Asphalt Shingle

Construction Metal Siding, Wood Frame

Foundation Poured Concrete

Additional Information

Date Listed May 23rd, 2025

Days on Market 7

Zoning R-CG

Listing Details

Listing Office RE/MAX Realty Professionals

Data is supplied by Pillar 9â„¢ MLSÂ® System. Pillar 9â„¢ is the owner of the copyright in its MLSÂ® System. Data is deemed reliable but is not guaranteed accurate by Pillar 9â„¢. The trademarks MLSÂ®, Multiple Listing ServiceÂ® and the associated logos are owned by The Canadian Real Estate Association (CREA) and identify the quality of services provided by real estate professionals who are members of CREA. Used under license.