

\$6,900,000 - 178 Clearview Drive, Rural Red Deer County

MLS® #A2236733

\$6,900,000

0 Bedroom, 0.00 Bathroom,
Commercial on 4.45 Acres

Clearview Indust. Park, Rural Red Deer
County, Alberta

Free standing building with large yard in Red Deer County. Well compacted fully fenced and gated yard, with potential for building expansion. Excellent property for manufacturing or service companies that require trailer and equipment storage. 32,570 SF freestanding building on 4.45 acres in Clearview Industrial Area. Office area includes 10 offices and a large boardroom. Warehouse features make-up air and two 5-ton cranes. Four (4) grade loading doors. Quick access to the QEII Highway and Highway 595. Zoned BSI (Business Service Industrial) suitable for a range of industrial uses.

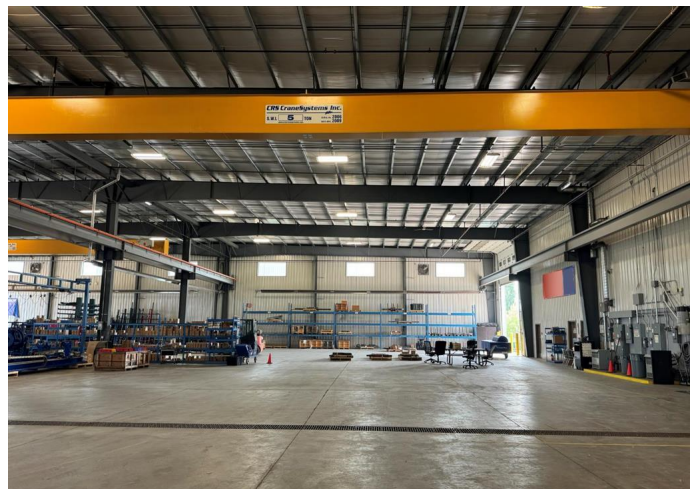
Built in 2009

Essential Information

MLS® #	A2236733
Price	\$6,900,000
Bathrooms	0.00
Acres	4.45
Year Built	2009
Type	Commercial
Sub-Type	Industrial
Status	Active

Community Information

Address 178 Clearview Drive



Subdivision	Clearview Indust. Park
City	Rural Red Deer County
County	Red Deer County
Province	Alberta
Postal Code	T4E 0A1

Additional Information

Date Listed	July 3rd, 2025
Days on Market	14
Zoning	BSI - Business service I

Listing Details

Listing Office	CDN Global Advisors Ltd.
----------------	--------------------------

Data is supplied by Pillar 9â„¢ MLS® System. Pillar 9â„¢ is the owner of the copyright in its MLS® System. Data is deemed reliable but is not guaranteed accurate by Pillar 9â„¢. The trademarks MLS®, Multiple Listing Service® and the associated logos are owned by The Canadian Real Estate Association (CREA) and identify the quality of services provided by real estate professionals who are members of CREA. Used under license.