

\$525,000 - 11 Wiley Crescent, Red Deer

MLS® #A2236773

\$525,000

5 Bedroom, 3.00 Bathroom, 1,425 sqft

Residential on 0.10 Acres

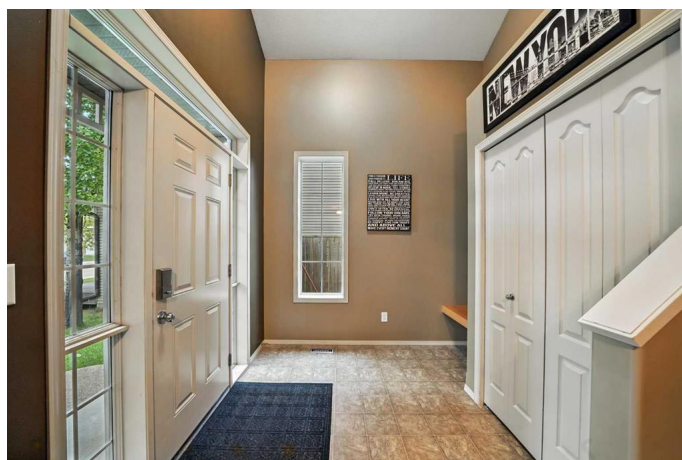
Westlake, Red Deer, Alberta

Nicely designed modified bi-level in Westlake with 5 bedrooms. This home has very nice curb appeal with stone highlights and exposed aggregate driveway & sidewalk. Very spacious front entry with a built in bench & closet leads you into this home. The kitchen has beautiful 2 tone hickory cabinets with a full tile backsplash, walk in pantry and an island. A good sized eating area with a garden door out to the deck. The family room has a gas fireplace and very large windows making this space very bright. Vaulted ceilings throughout the living, dining, kitchen areas. Finishing off the main floor are 2 bedrooms and a 4 pce bath. The huge primary bedroom is above the garage. It has a walk in closet, a 4 pce ensuite and a vaulted ceiling. Downstairs has a large family room, 2 more bedrooms, a 4 pce bath, laundry area & a storage area. This home is air conditioned and has a high eff furnace & h/w tank. Recent updates include shingles in 2024, washer & dryer in 2022, fridge, stove & dishwasher in 2023 and the hot water tank in 2021.

Built in 2005

Essential Information

MLS® #	A2236773
Price	\$525,000
Bedrooms	5
Bathrooms	3.00



Full Baths	3
Square Footage	1,425
Acres	0.10
Year Built	2005
Type	Residential
Sub-Type	Detached
Style	Modified Bi-Level
Status	Active

Community Information

Address	11 Wiley Crescent
Subdivision	Westlake
City	Red Deer
County	Red Deer
Province	Alberta
Postal Code	T4N 7G4

Amenities

Parking Spaces	2
Parking	Double Garage Attached
# of Garages	2

Interior

Interior Features	Breakfast Bar, Kitchen Island, Open Floorplan, Pantry, Storage, Vaulted Ceiling(s), Walk-In Closet(s)
Appliances	Dishwasher, Dryer, Garage Control(s), Microwave Hood Fan, Refrigerator, Stove(s), Washer, Window Coverings
Heating	Forced Air, Natural Gas, High Efficiency
Cooling	Central Air
Fireplace	Yes
# of Fireplaces	1
Fireplaces	Gas
Has Basement	Yes
Basement	Finished, Full

Exterior

Exterior Features	Private Yard
Lot Description	Back Lane, Landscaped
Roof	Asphalt Shingle

Construction	Stone, Vinyl Siding, Wood Frame
Foundation	Poured Concrete

Additional Information

Date Listed	July 3rd, 2025
Days on Market	5
Zoning	R-L

Listing Details

Listing Office	Century 21 Maximum
----------------	--------------------

Data is supplied by Pillar 9â„¢ MLS® System. Pillar 9â„¢ is the owner of the copyright in its MLS® System. Data is deemed reliable but is not guaranteed accurate by Pillar 9â„¢. The trademarks MLS®, Multiple Listing Service® and the associated logos are owned by The Canadian Real Estate Association (CREA) and identify the quality of services provided by real estate professionals who are members of CREA. Used under license.